



J.N.T. INDUSTRIAL CORPORATION



URS is a member of Registrar of Standards (Holdings) Ltd.



J.N.T. 1

- Precision Metal Stamping
- Tool & Die Progressive Die Making
- CNC Lathe & CNC Tapping Machining



J.N.T. 2





IATF16949 : 2016
Issue. 7 Sep 2018



ISO 9001 : 2015
Issue. 7 Sep 2018

Press MACHINE

| No. | Machine Name / Spec. | Spec Die High | Q'Ty | Capacity/ Month |
|-----|---|----------------------|----------|--------------------|
| 1 | Power Press Machine 300 t. | 940 x 2700 x 550 | 2 Units | 65,000 Pcs. |
| 2 | Power Press Machine 200 t. | 840 x 1390 x 450 | 1 Units | 78,000 Pcs. |
| 3 | Power Press Machine 100 t. | 680 x 1070 x 350 | 3 Units | 273,000 Pcs. |
| 4 | Power Press Machine 80 t. | 600 x 1070 x 300 | 15 Units | 1,950,000 Pcs. |
| 5 | Power Press Machine 60 , 40 , 25 , 20 t. | 450 x 730 x 160 | 14 Units | 2,184,000 Pcs. |
| 6 | Coil Feeder | Feed Lever 150 MM | 1 Units | T4.5 Max. |
| | | | | |



CNC WELDING SPOT

| No. | Machine Name | Brand | Origin | Spec | Vol. |
|-----|-------------------|-----------|--------|--------------|--------|
| 1 | CNC Lathe Machine | MAZAK | JPN | chuck 200 mm | 1 unit |
| 2 | CNC Lathe Machine | YCM | TWN | chuck 200 mm | 1 unit |
| 3 | CNC Lathe Machine | SEIBU | JPN | chuck 125 mm | 1 unit |
| 4 | ROBOT WELDING | YASKAWA | JPN | 1,440 Max | 1 unit |
| 5 | SPOT WELDING | SANG TONG | TH | 50 KVA | 1 unit |
| 6 | SPOT WELDING | SANG TONG | TH | 85 KVA | 1 unit |

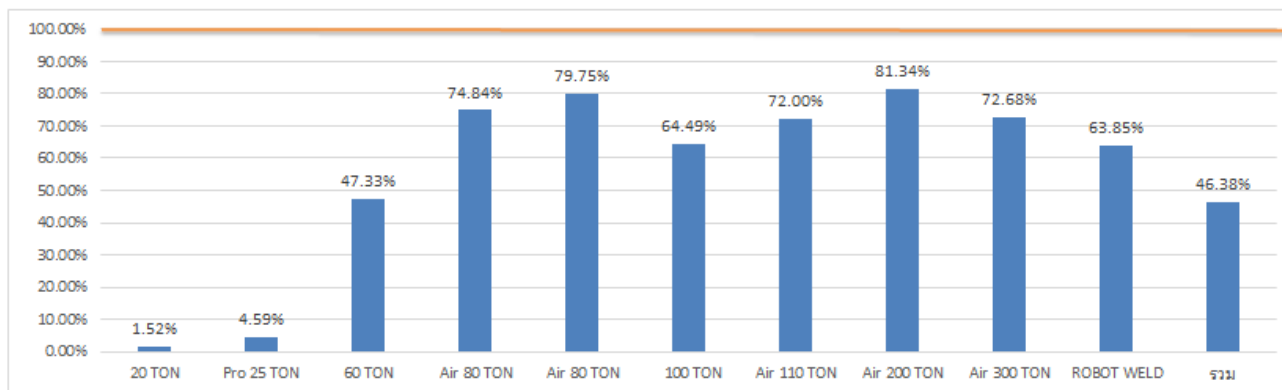


กำลังการผลิต 2021

Date : 12/1/21

MK Dept.

| เครื่อง | จำนวนเครื่อง | กำลังการผลิต เครื่อง / วัน | กำลังการผลิต รวม / วัน | กำลังการผลิต รวม / เดือน (24) | กำลังการผลิตปัจจุบัน | % ที่ใช้งาน | Remain | | Remark |
|-------------|--------------|-------------------------------|---------------------------|----------------------------------|----------------------|-------------|--------------|--------|--------|
| | | | | | | | Storke | % | |
| 20 TON | 7 | 5,000 | 35,000 | 840,000 | 12,800 | 1.52% | 827,200 | 98.48% | |
| Pro 25 TON | 1 | 15,000 | 15,000 | 360,000 | 16,533 | 4.59% | 343,467 | 95.41% | |
| 60 TON | 5 | 4,000 | 20,000 | 480,000 | 227,176 | 47.33% | 252,824 | 52.67% | |
| Air 80 TON | 4 | 3,000 | 12,000 | 288,000 | 215,535 | 74.84% | 72,465 | 25.16% | |
| Air 80 TON | 12 | 3,500 | 42,000 | 1,008,000 | 803,882 | 79.75% | 204,118 | 20.25% | |
| 100 TON | 2 | 2,500 | 5,000 | 120,000 | 77,382 | 64.49% | 42,618 | 35.52% | |
| Air 110 TON | 2 | 2,500 | 5,000 | 120,000 | 86,399 | 72.00% | 33,601 | 28.00% | |
| Air 200 TON | 3 | 2,200 | 6,600 | 158,400 | 128,840 | 81.34% | 29,560 | 18.66% | |
| Air 300 TON | 2 | 1,500 | 3,000 | 72,000 | 52,327 | 72.68% | 19,673 | 27.32% | |
| ROBOT WELD | 2 | 1,000 | 2,000 | 48,000 | 30,648 | 63.85% | 17,352 | 36.15% | |
| รวม | 40 | 40,200 | 145,600 | 3,494,400 | 1,620,874.00 | 46.38% | 1,842,578.00 | 52.74% | |



SPEC MATERIAL STAMPING

| SPEC MAT'L | THICKNESS | MAKER MAT'L | MAKER ZINC | MAKER EDP | MAKER HARDENING |
|--|--------------|---|-------------------|--------------|-----------------------------------|
| SPHC P/O SPCC-SD SPCEN-SD SAPH440 SS400/SPHC SP590BQ S35C SPGZL-N SK85 SUS304 | 0.4 – 14 mm. | JFE POSCO SSI KOBE NS-SIAM SSI MSAT TOYOTA TSUSHO | MMC EZP API | JRP HK | TOPY TISCO UI THAI PAKER |



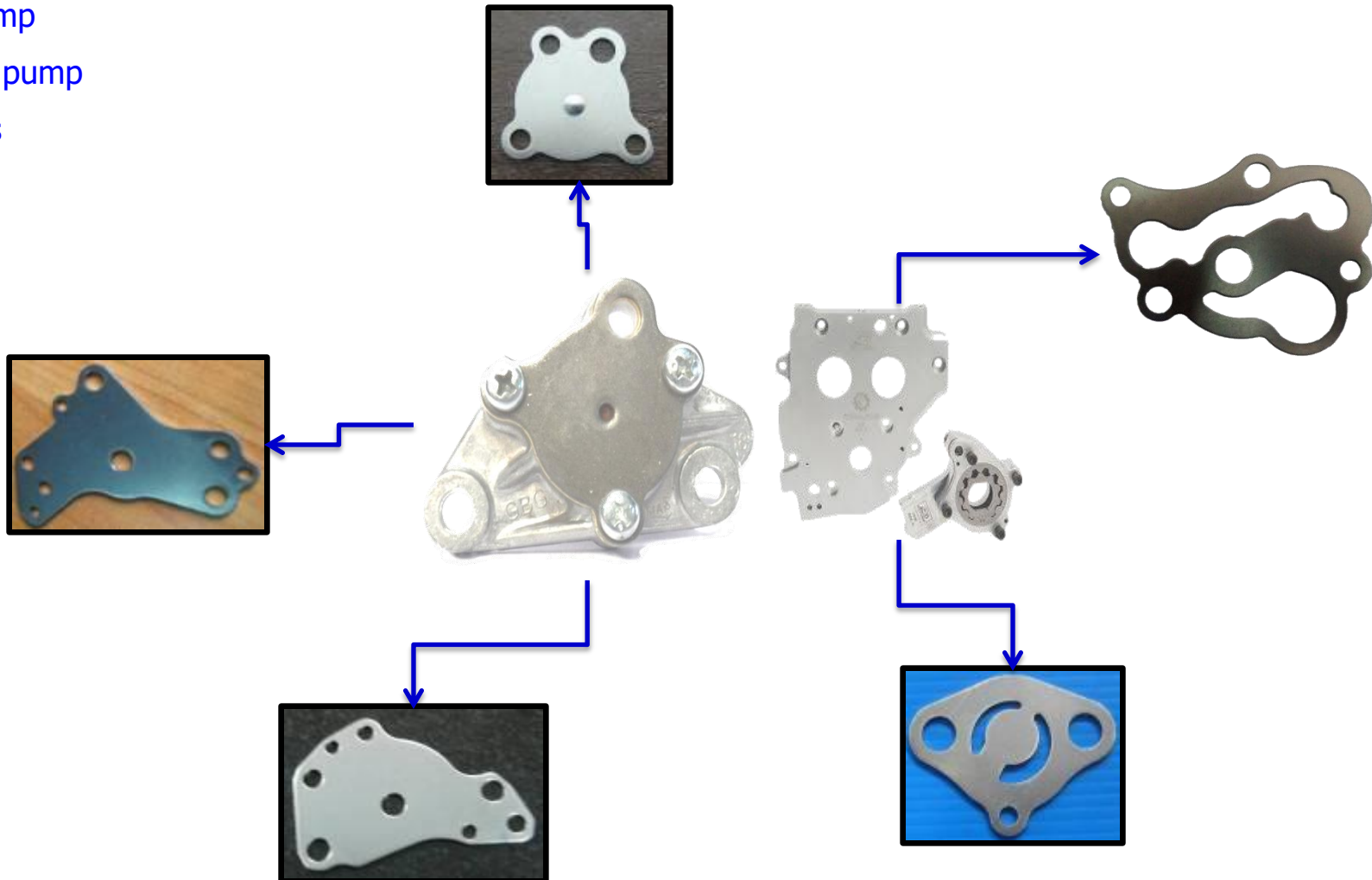
posco



**NIPPON STEEL &
SUMITOMO METAL**

Press Part for Engine Motorcycle

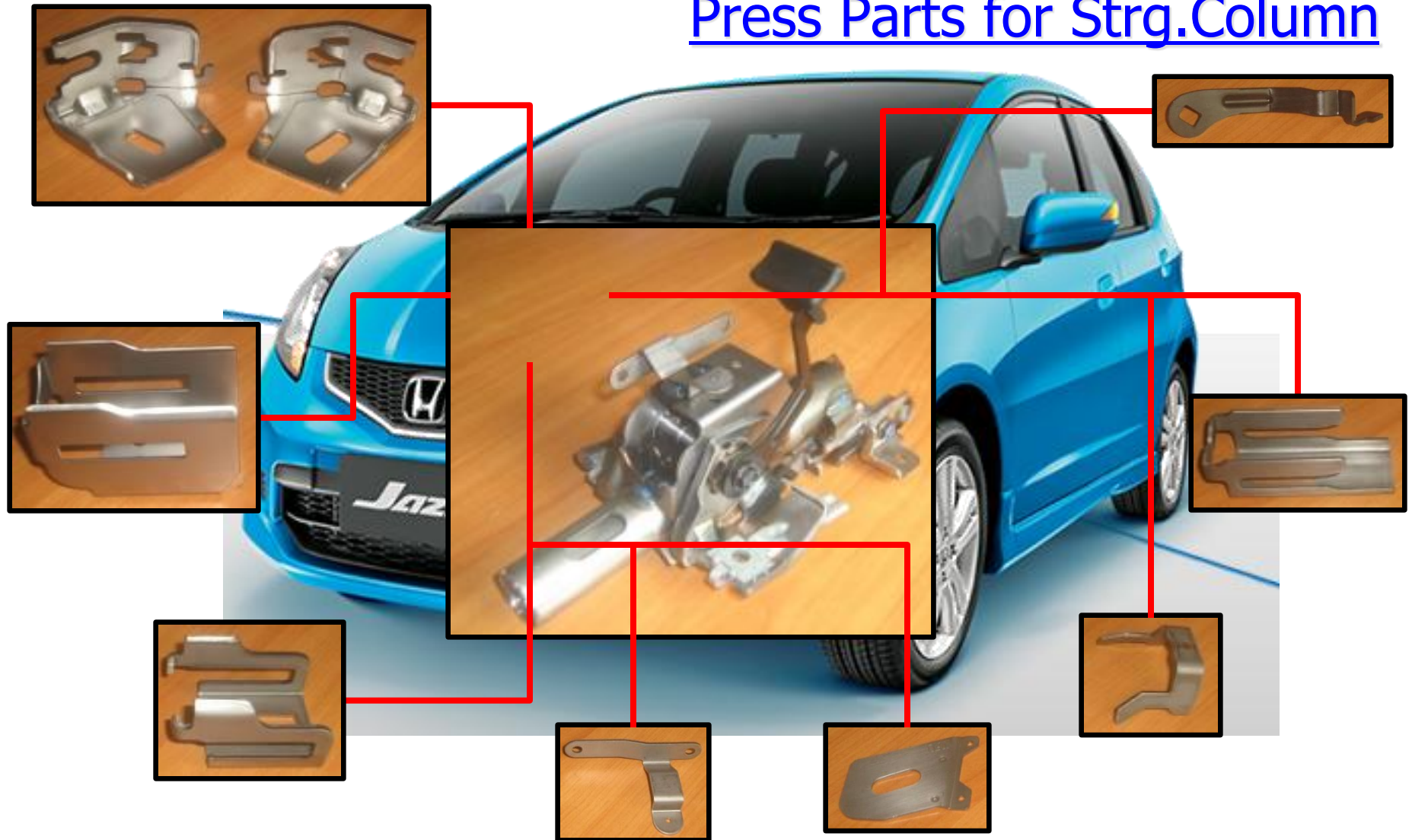
- Oil Pump
- Water pump
- Others



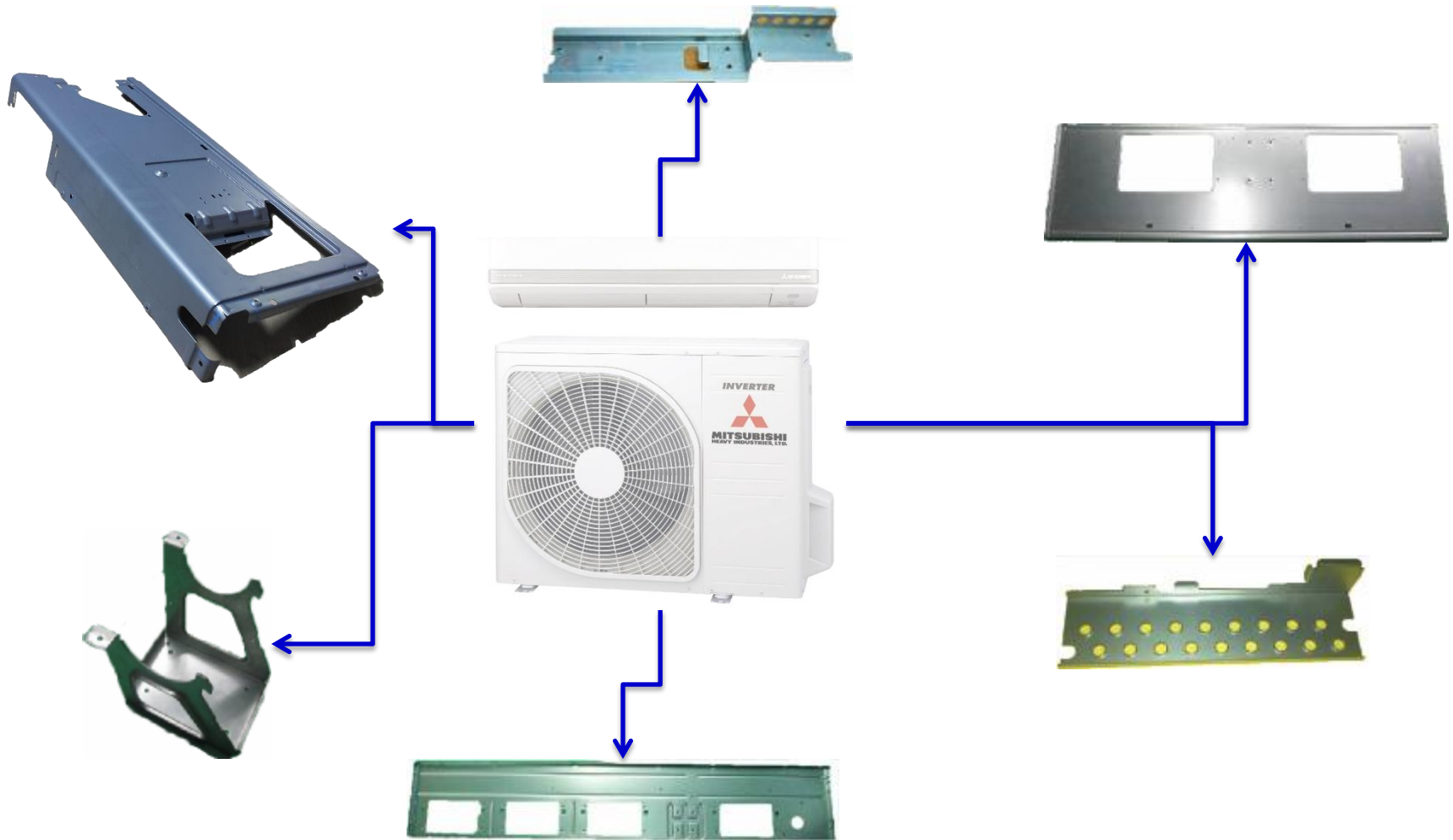
Press Parts for Steering Column Safety Part



Press Parts for Strg.Column



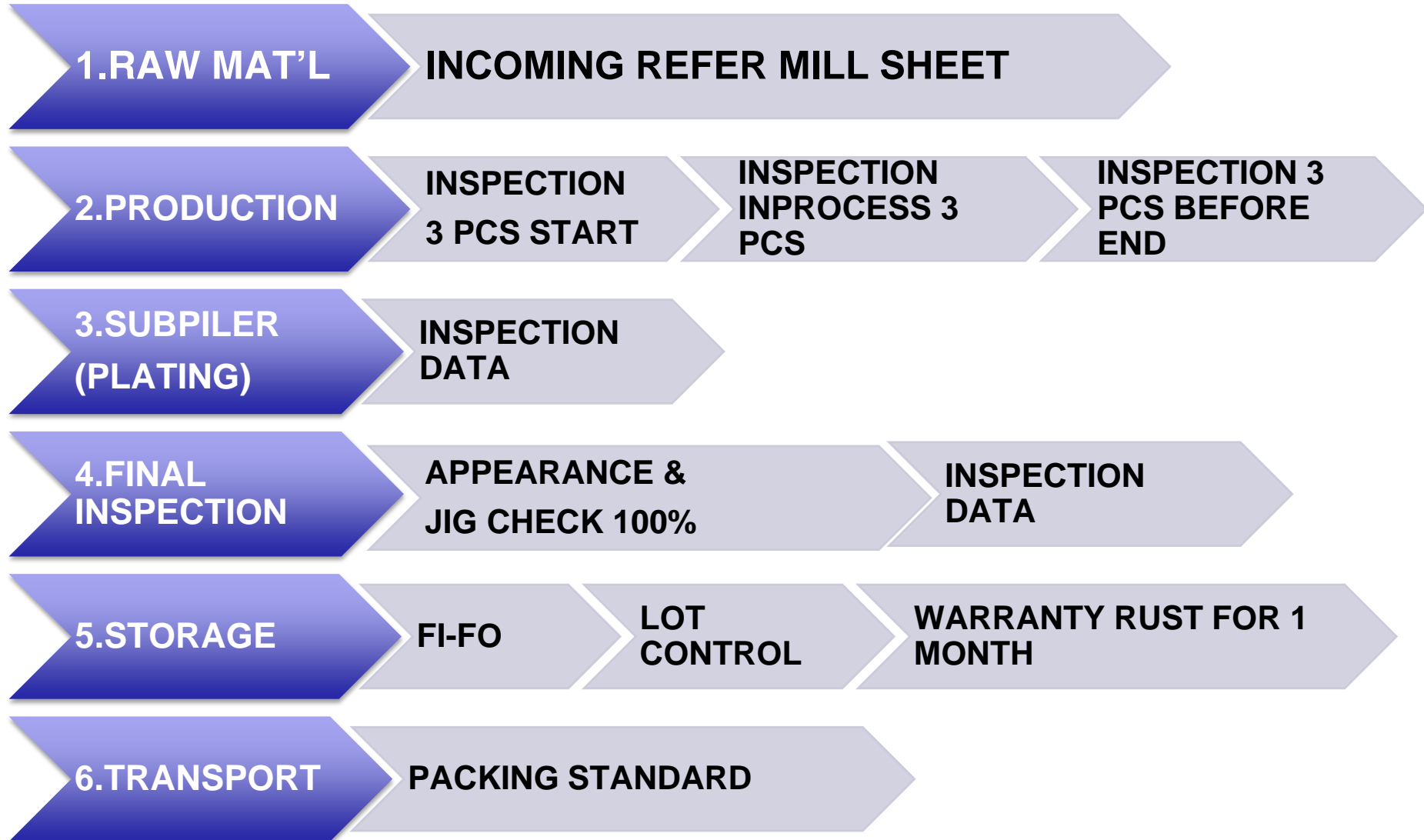
Press Part for Air Condition



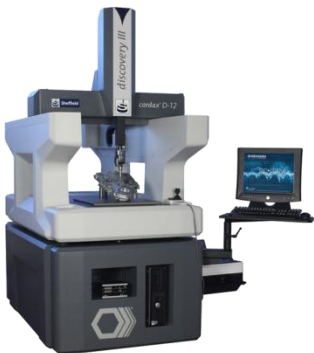


Single Die / Progressive Die for sales & service





| No. | Machine Name / Spec. | Brand | Calibration frequency | Scope | Q'ty |
|-----|--------------------------------------|-----------|-----------------------|--------------|---------|
| 1 | Coordinating Measuring Machine (CMM) | Sheffield | 2 Year | 500X600 | 1 Unit |
| 2 | High Gauge | Mitutoyo | 1 Year | 0-600 | 3 Units |
| 3 | Vernier | Mitutoyo | 6 Month | 0-200 | 4 Units |
| 4 | Micro Meter | Mitutoyo | 1 Year | 0-25 | 3 Units |
| 5 | Dial Indicator | Mitutoyo | 1 Year | 0-1 | 2 Units |
| 6 | Dial Caliper for Inside | Mitutoyo | 1 Year | 40-60 | 1 Unit |
| 7 | Universal Bevel Protractor | Mitutoyo | 1 Year | 0-360° | 1 Unit |
| 8 | GRANITE SURFACE PLATE | - | 2 Year | 750X1000 | 3 Units |
| 9 | Micro scope | Carton | 2 Year | 50x X108 mm. | 1 Unit |



General Manager : Mr.Kantapat Naksrie
+666-1959-1115

Factory Manager : Mr.Kantapat Naksrie
+666-1959-1115

Marketing : Mr.Kantapat Naksrie
+666-1959-1115

E-Mail : marketing@jntindustrial.com

Web Site : www.jntindustrial.com

Office Tel : 02-385-0330, 02-385-0100, 02-385-0845

Fax : 02-385-0737



E-Mail



Web Site

