



J.N.T. INDUSTRIAL CORPORATION



URS is a member of Registrar of Standards (Holdings) Ltd.



J.N.T. 1

- Precision Metal Stamping
- Tool & Die Progressive Die Making
- CNC Lathe & CNC Tapping Machining



J.N.T. 2





IATF16949 : 2016
Issue. 7 Sep 2018



ISO 9001 : 2015
Issue. 7 Sep 2018

Press MACHINE

No.	Machine Name / Spec.	Spec Die High	Q'Ty	Capacity/ Month
1	Power Press Machine 300 t.	940 x 2700 x 550	2 Units	65,000 Pcs.
2	Power Press Machine 200 t.	840 x 1390 x 450	1 Units	78,000 Pcs.
3	Power Press Machine 100 t.	680 x 1070 x 350	3 Units	273,000 Pcs.
4	Power Press Machine 80 t.	600 x 1070 x 300	15 Units	1,950,000 Pcs.
5	Power Press Machine 60 , 40 , 25 , 20 t.	450 x 730 x 160	14 Units	2,184,000 Pcs.
6	Coil Feeder	Feed Lever 150 MM	1 Units	T4.5 Max.



CNC WELDING SPOT

No.	Machine Name	Brand	Origin	Spec	Vol.
1	CNC Lathe Machine	MAZAK	JPN	chuck 200 mm	1 unit
2	CNC Lathe Machine	YCM	TWN	chuck 200 mm	1 unit
3	CNC Lathe Machine	SEIBU	JPN	chuck 125 mm	1 unit
4	ROBOT WELDING	YASKAWA	JPN	1,440 Max	1 unit
5	SPOT WELDING	SANG TONG	TH	50 KVA	1 unit
6	SPOT WELDING	SANG TONG	TH	85 KVA	1 unit

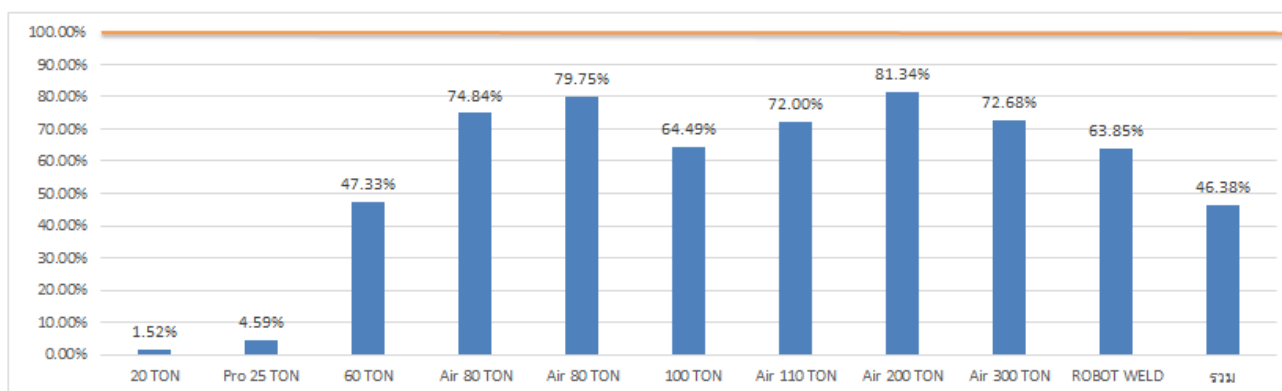


กำลังการผลิต 2021

Date : 12/1/21

MK Dept.

เครื่อง	จำนวนเครื่อง	กำลังการผลิต เครื่อง / วัน	กำลังการผลิต รวม / วัน	กำลังการผลิต รวม / เดือน (24)	กำลังการผลิตปัจจุบัน	% ที่ใช้งาน	Remain		Remark
							Storke	%	
20 TON	7	5,000	35,000	840,000	12,800	1.52%	827,200	98.48%	
Pro 25 TON	1	15,000	15,000	360,000	16,533	4.59%	343,467	95.41%	
60 TON	5	4,000	20,000	480,000	227,176	47.33%	252,824	52.67%	
Air 80 TON	4	3,000	12,000	288,000	215,535	74.84%	72,465	25.16%	
Air 80 TON	12	3,500	42,000	1,008,000	803,882	79.75%	204,118	20.25%	
100 TON	2	2,500	5,000	120,000	77,382	64.49%	42,618	35.52%	
Air 110 TON	2	2,500	5,000	120,000	86,399	72.00%	33,601	28.00%	
Air 200 TON	3	2,200	6,600	158,400	128,840	81.34%	29,560	18.66%	
Air 300 TON	2	1,500	3,000	72,000	52,327	72.68%	19,673	27.32%	
ROBOT WELD	2	1,000	2,000	48,000	30,648	63.85%	17,352	36.15%	
รวม	40	40,200	145,600	3,494,400	1,620,874.00	46.38%	1,842,526.00	52.74%	



SPEC MATERIAL STAMPING

SPEC MAT'L	THICKNESS	MAKER MAT'L	MAKER ZINC	MAKER EDP	MAKER HARDENING
SPHC P/O SPCC-SD SPCEN-SD SAPH440 SS400/SPHC SP590BQ S35C SPGZL-N SK85 SUS304	0.4 – 14 mm.	JFE POSCO SSI KOBE NS-SIAM SSI MSAT TOYOTA TSUSHO	MMC EZP API	JRP HK	TOPY TISCO UI THAI PAKER



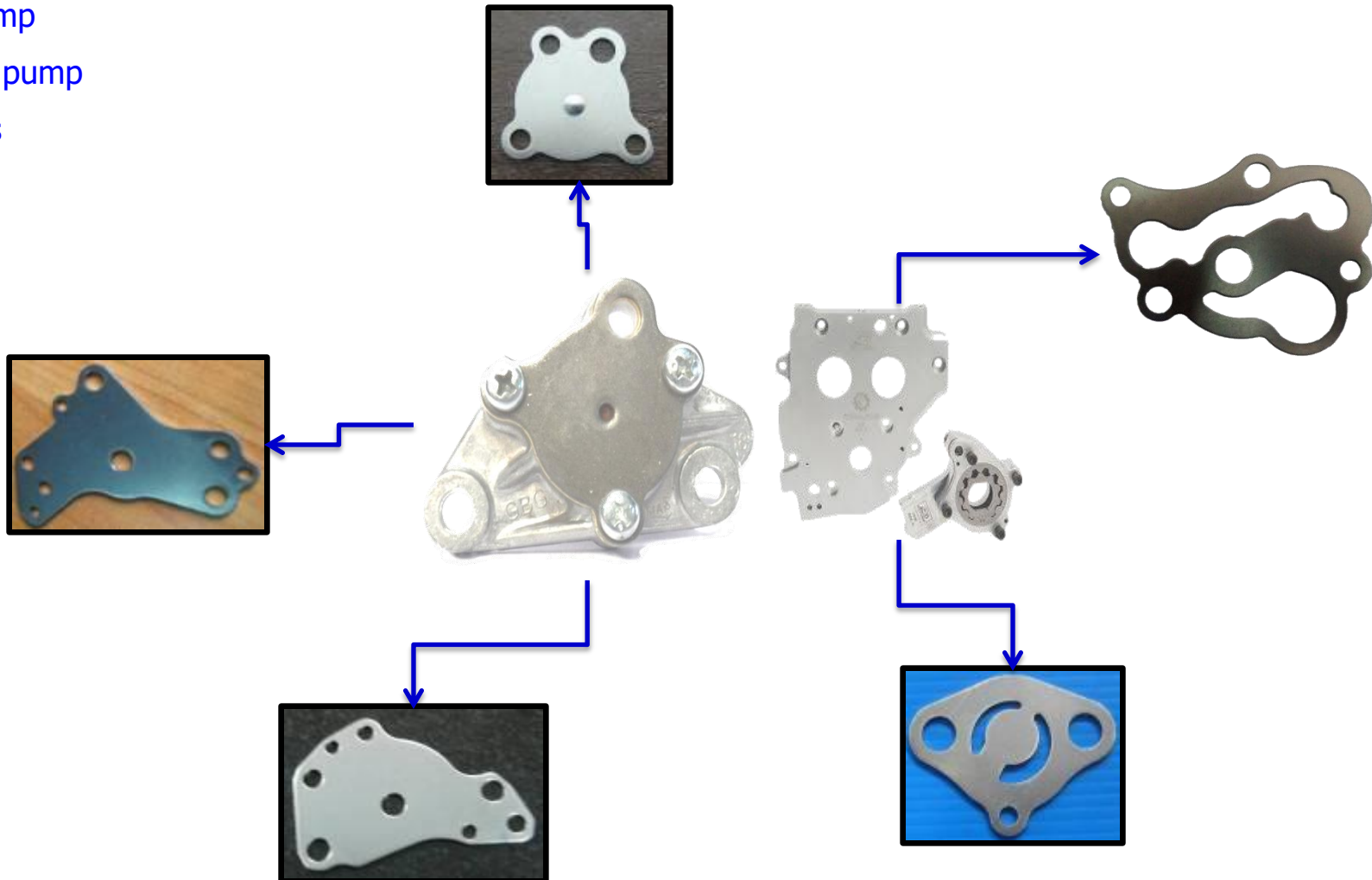
posco



**NIPPON STEEL &
SUMITOMO METAL**

Press Part for Engine Motorcycle

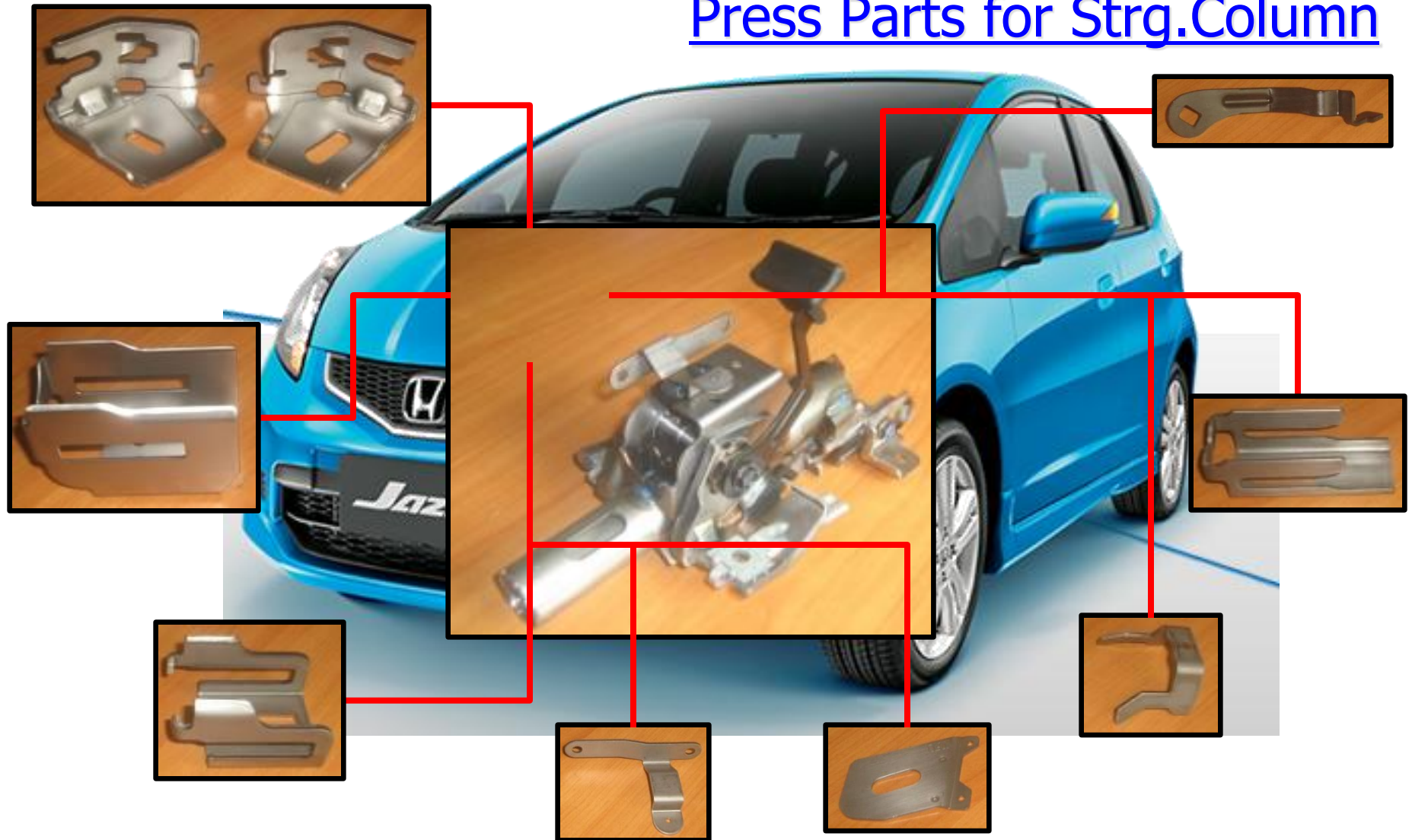
- Oil Pump
- Water pump
- Others



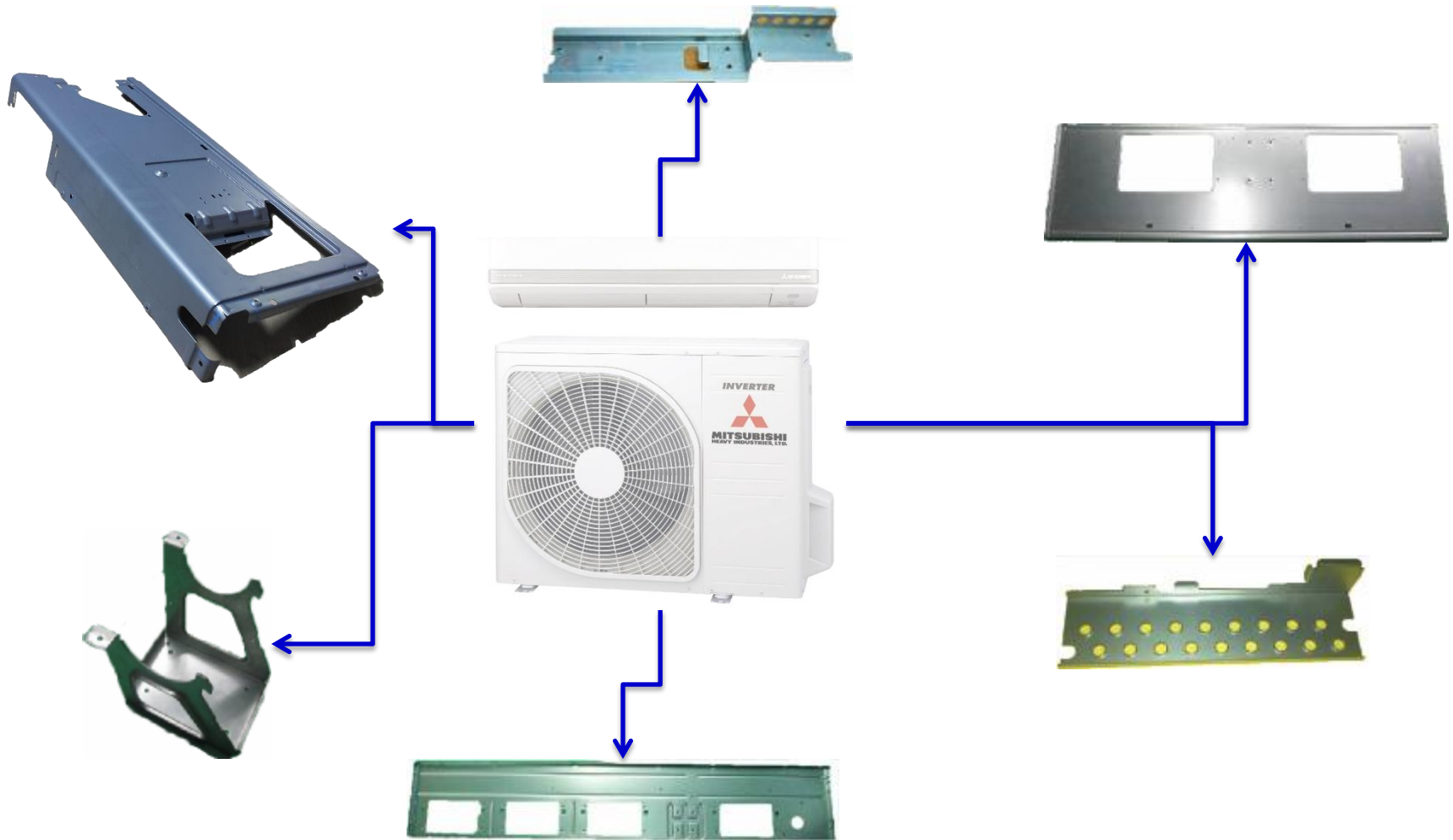
Press Parts for Steering Column Safety Part



Press Parts for Strg.Column

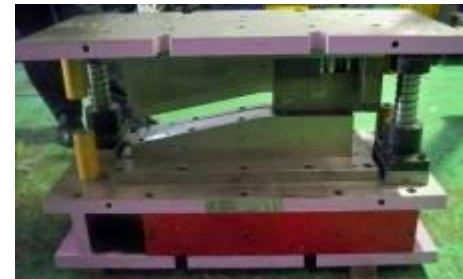
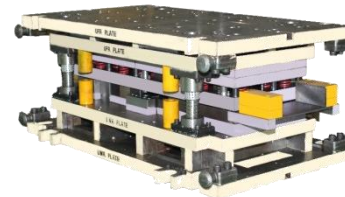


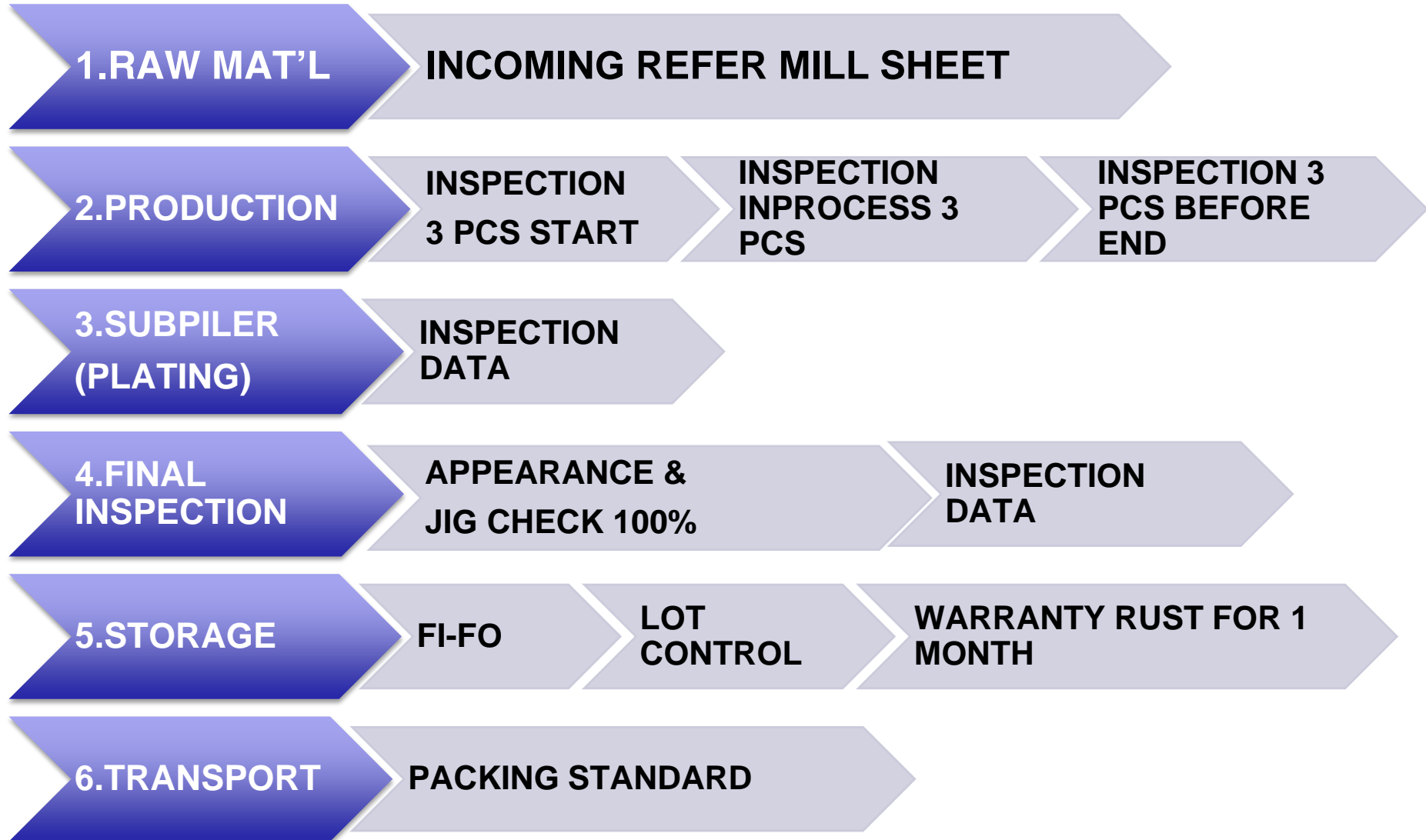
Press Part for Air Condition



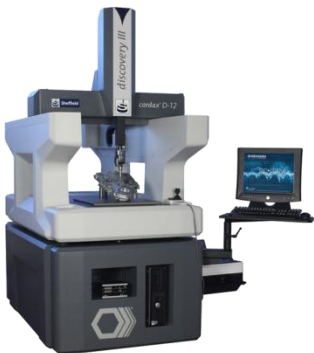


Single Die / Progressive Die for sales & service





No.	Machine Name / Spec.	Brand	Calibration frequency	Scope	Q'ty
1	Coordinating Measuring Machine (CMM)	Sheffield	2 Year	500X600	1 Unit
2	High Gauge	Mitutoyo	1 Year	0-600	3 Units
3	Vernier	Mitutoyo	6 Month	0-200	4 Units
4	Micro Meter	Mitutoyo	1 Year	0-25	3 Units
5	Dial Indicator	Mitutoyo	1 Year	0-1	2 Units
6	Dial Caliper for Inside	Mitutoyo	1 Year	40-60	1 Unit
7	Universal Bevel Protractor	Mitutoyo	1 Year	0-360°	1 Unit
8	GRANITE SURFACE PLATE	-	2 Year	750X1000	3 Units
9	Micro scope	Carton	2 Year	50x X108 mm.	1 Unit



General Manager : Mr.Kantapat Naksrie
+666-1959-1115

Factory Manager : Mr.Kantapat Naksrie
+666-1959-1115

Marketing : Mr.Kantapat Naksrie
+666-1959-1115

E-Mail : marketing@jntindustrial.com

Web Site : www.jntindustrial.com

Office Tel : 02-385-0330, 02-385-0100, 02-385-0845

Fax : 02-385-0737



E-Mail



Web Site

J.N.T. Map

